

# New Internet Radio Feature

This wireless speaker has been designed to allow you to enjoy Pandora®/Internet Radio. In order to play Pandora/Internet Radio, however, it may be necessary to update the unit's firmware and to also install Pioneer ControlApp on your mobile device.

\* As of February 2012, the Pandora service is only offered in the United States.

Contents	
Updating the unit's firmware .....	1
Installing ControlApp .....	2
Listening to Pandora/Internet Radio .....	2
Troubleshooting .....	5

## Updating the unit's firmware

In order to use the Pandora/Internet Radio function, it may be necessary to update the unit's firmware. First connect this unit and your PC\*1 to the same network.

For more information on network connections, see the section "Connect to network", parts A to E (page 18 of the Operating Instructions).<sup>\*2</sup>

\*1 Operation has been confirmed using Internet Explorer versions 8/9 on Windows, and Safari on Mac computers.

\*2 Firmware updating cannot be performed using the method described in "F. Wireless Direct Function".

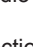
**Important**

- Do not disconnect the AC power adapter during the update process. When using the XW-SMA3, it is necessary to first connect the AC adapter to the unit (updating cannot be performed when operating the unit using the built-in battery). When updating the unit's firmware, it is necessary to connect the unit to a network (except method F of "Connect to network"); for more information see page 18 of the Operating Instructions.

### 1. Display the Web Control menu.

Choose the access method appropriate for your device.

#### Using Safari to access Web Control

- Start the Safari browser on your computer.
- Click on the bookmark icon (  ) at the upper left of the screen.
- Click on Bonjour list (a), and select this unit's friendly name (b).  
It is necessary to previously set Safari to display Bonjour.

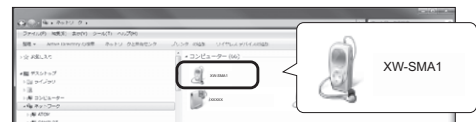


#### Using UPnP function to access Web Control (after connecting to the network)

This unit supports UPnP. You can access the Web Control menu from a UPnP-supported device connected to the same network as this unit. For details, consult your computer's operating instructions.

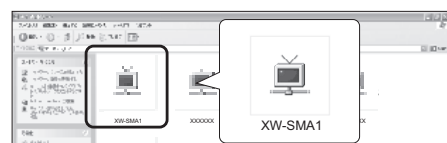
### Using Microsoft Windows 7/Vista

- Click on "Start" → "Documents" → "My Documents".
- From the Explorer menu on the left side of the screen, select "Network".  
This unit will appear as an icon connected to the same network.
- Right-click on this unit's icon and select "View device webpage".  
You should now be able to access the Web Control menu.



### Using Windows XP

- Click on "Start" → "My Network".
- Click on "Display icons for UPnP devices connected to the network".  
This unit will appear as an icon connected to the same network.
- Double-click on this unit's icon.  
You should now be able to access the Web Control menu.



## 2. Confirm your unit's firmware version.

Confirm the unit's firmware version on the Web Control menu. If the four digits following the "S" are lower than [1050], a firmware update is required. If the four digits are same or greater than [1050], no update is required.



## 3. Download the new firmware.

The firmware update can be downloaded from Pioneer's website.

### Note

- The firmware file will be downloaded to the folder you specify.
- Depending on your browser and its settings, the destination selection window may not appear when downloading the firmware file. In this case, the file will be downloaded automatically to the folder designated in your browser settings.
- The firmware file will be downloaded in compressed "zip" format.

**(Example) Compressed file name: SMA2013NMP\*\*\*\*.zip**  
The four asterisks (\*\*\*\*) indicate the version number.

## 4. Open the downloaded compressed file.

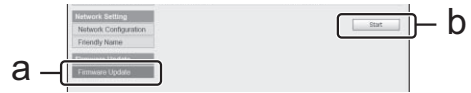
Decompress the firmware file and store the contents in a folder of your choosing.

### Note

- When the compressed file is decompressed, a new folder will be created and the updated firmware file (SMA2013NMP\*\*\*\*.fw) will be stored in the new folder.
- For more information about how to decompress files, consult your software or computer dealer.

## 5. Select firmware update.

On the Web Control menu, click on **Firmware Update** (a) followed by **Start** (b).



The Firmware Update Prepare screen is displayed. If the screen does not switch automatically, click on **Click Here**.

## 6. Select the update file.

Click on the **Choose File** button (a) and select the firmware file (SMA2013NMP\*\*\*\*.fw) previously downloaded, and then click on the **Upload** button (b). Then, press **Yes** on the confirmation screen. Once the update has begun, it cannot be cancelled.



## 7. Confirm that the update has completed properly.

When the update has begun, the update process will be displayed. When the update process finishes, follow the instructions on the screen and unplug the power cord.

### Note

- If the update process is not completed within ten minutes, try unplugging the unit, then repeat the update process.

# Installing ControlApp

Next, the Pioneer application ControlApp must be installed on your mobile device. For more information about your operating environment, access the appropriate Website as noted below.

### If using an iPhone or iPod touch

For iPhone or iOS device, you can obtain from "AppStore".

### If using an Android device

For Android, you can obtain from "Google Play".

# Listening to Pandora/Internet Radio

If using ControlApp for the first time, follow these procedures to start the application.

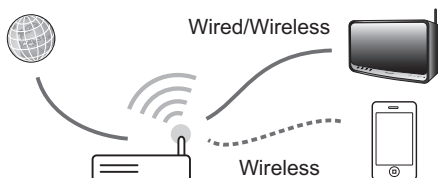
## 1. Connect this unit to the network you normally use.

## 2. Connect your mobile device to the same network.

Confirm that ControlApp is installed on your mobile device.

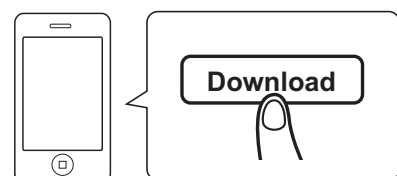
## 3. Turn on the power to this unit.

## 4. Start ControlApp on your mobile device.

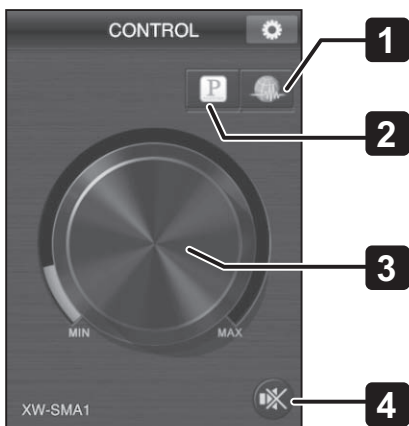


## 5. Tap the Download button.

When download is completed, the CONTROL screen will be displayed.



## Operating the CONTROL screen



- 1. Internet Radio**  
Switches to the Internet Radio Control screen.
- 2. Pandora\***  
Switches to the Pandora Control screen.

\* As of February 2012, the Pandora service is only offered in the United States.

**Note**

- When the unit is set to Quick Start Mode and is currently in standby mode, if the **Internet Radio** or **Pandora** button is tapped, the unit's power will turn on and source input will switch to either Internet Radio or Pandora.

- 3. VOLUME**  
Drag this control to adjust the sound volume.
- 4. MUTE**  
Tap this icon to activate and deactivate the mute function.

## Playing music

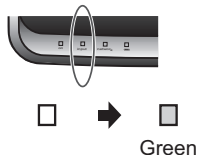
- 1. Connect this unit and your mobile device to a network.**

The Pandora and Internet Radio functions cannot be used when using a wireless direct connection.

- 2. Start ControlApp.**

- 3. Tap the Pandora or Internet Radio button.**

The unit's source input will switch to Pandora or Internet Radio, and the unit's **input** indicator will light steadily green.



- 4. Tap the playback control button.**

Audio playback will begin. The playback control buttons used will differ depending on the function.

**Note**

- When listening to music with Pandora/Internet Radio, the following remote control buttons will be disabled: **▶||** (play/pause), **◀◀** (prev), and **▶▶** (next)
- Buttons remaining enabled on this unit and its remote control include **⏻ standby/on**, **input**, and **volume +/- (vol -/+)**.

## Stopping radio play

During use of Pandora/Internet Radio, play can be stopped by performing any of the following operations.

- **Using any button controls on the unit or its remote control that turn the unit's power off**  
The next time power is restored, function will be automatically switched to the input (iPod or AUX IN) selected before use of Pandora or Internet Radio.
- **Using any button controls on the unit or its remote control that change input to anything besides Pandora or Internet Radio**  
Function will be automatically switched to the input (iPod or AUX IN) selected before use of Pandora or Internet Radio.
- **Using another device to operate this unit and start AirPlay or DMR audio play**  
Function will switch to AirPlay or DMR function.
- **During Pandora or Internet Radio play, if the MUTE function is set to ON and more than 20 minutes expires**  
When the MUTE function has operated for 20 minutes, the unit's power is automatically turned off. The auto power off function will be disabled if the MUTE function is turned off, or the MUTE function is cancelled due to operation of the volume control.

## If ControlApp is disabled or the connection with this unit is disrupted during audio playback

- If you return to the home page on your mobile device, start another application, or allow the device to enter sleep mode, the connection between this unit and ControlApp will be cut. Even if the connection is cut, however, audio play will continue on the unit.
- Even if the connection with ControlApp is cut, the following buttons on the unit and its remote control will continue to be enabled:  
⏻ standby/on, input, volume -/+ (vol -/+).
- In the event ControlApp is stopped during audio play, the unit can be operated again by restarting ControlApp and reestablishing a connection between it and this unit.

### Note

- Pandora is personalized internet radio that is designed to help you discover new music you'll love mixed in with music you already know.
- For details, check the website: <http://www.pandora.com>
- As of February 2012, the Pandora service is only offered in the United States.
- You must have a registered account in order to listen to songs using Pandora Internet Radio.
- Select PANDORA, then follow the instructions on the screen to make the account settings.
- Some functions may be changed at Pandora's discretion.
- When disposing of the product, we recommend you reset it to delete the data. See Resetting the system on page 35 on the Operating Instructions.
- Pandora®, the leading internet radio service, gives people music they love anytime, anywhere, through personalized radio stations.

### Note

- Track information may not be displayed correctly depending on the station and audio contents.

### Note

- "Internet Radio" is radio programming distributed over the internet. Numerous internet radio stations exist around the world, ranging in size from small services run by individuals to large stations managed by commercial ground-based broadcasting companies. Ordinary ground-based broadcasting is limited to the range of the radio wave, but Internet Radio allows reception of radio programs from around the world, delivered through the Internet. On the other hand, depending on the status of the Internet connection, broadcast sounds may sometimes be interrupted or garbled.
  - A broadband connection is recommended when listening to Internet Radio. Use of a 56K modem or ISDN connection may inhibit your ability to fully appreciate the potential of Internet Radio.
  - Computer port numbers for Internet Radio may differ, depending on the station, so it is recommended to check your firewall settings.
  - The provision of lists of broadcasting stations by vTuner may be discontinued without notification.
  - Broadcasting stations sometimes interrupt or discontinue broadcasts. In such cases, it may not be possible to receive broadcasts from a station, even though it is published on a list of available stations.
  - The list of Internet Radio stations provided with this unit is based on the radio station database service vTuner. This database service is edited and compiled for use with this unit.
- vTuner is an online contents service for Internet Radio. For more information about vTuner, consult the website at <http://www.vtuner.com>.
- This product is protected by certain intellectual property rights held by NEMS and BridgeCo. Use or distribution of such technology outside of this product is prohibited without a license from NEMS and BridgeCo or their authorized subsidiary.
- Accessing external contents requires a high-speed Internet connection, together with registration and contract with a commercial Internet provider. Services from third-person content providers may be changed, interrupted, or discontinued without notice, and Pioneer assumes no responsibility for any such issues. Pioneer makes no guarantees regarding the continuity or future availability of external content-providing services.

## Using dedicated Pioneer website to register stations not on the vTuner list

This unit can be used to register and play programmed material from stations not found on lists distributed by vTuner. To do this, confirm the access code necessary to register this unit, and use that code to access the dedicated Pioneer internet radio site; through it, you can register your favorite stations. The URL for the dedicated Pioneer Internet Radio site is <http://www.radio-pioneer.com>.

### 1. Display the top level screen of the Internet Radio list.

### 2. Tap on "Help".

### 3. Tap on "Get access code".

The screen will display the access code necessary to register stations on the dedicated Pioneer Internet Radio site; record that access code on piece of paper.

The Help screen allows you to confirm the following items:

- Get access code: Displays access code necessary to register on the dedicated Pioneer Internet Radio site.
- Show Your WebID/PW: After registering on the dedicated Pioneer Internet Radio site, your registration ID and password will be displayed.
- Reset Your WebID/PW: Resets all registration information on the dedicated Pioneer Internet Radio site. When this is reset, any broadcast stations you have registered there will also be erased, so if you wish to continue to listen to any sites you previously registered, re-register them after performing the reset.

### 4. Accessing the dedicated Pioneer Internet Radio site from your computer.

<http://www.radio-pioneer.com>

Use the above URL to access the site.

5. To change the site's language, choose the applicable country flag on the first page of this website.
6. Read the disclaimer and if in agreement, click on "ACCEPT".
7. Use the access code noted in step 3 to perform user registration according to the instructions on the screen.
8. Follow the instructions on the screen to register your favorite stations.  
Here, you can register both stations not on the vTuner list, and stations on the list as well. In this case, the stations will be recorded on this unit as favorite stations, allowing you to play them easily.

## Troubleshooting

Problem	Cause/Remedy
Can't decompress firmware file (zip file).	<ul style="list-style-type: none"> <li>• When using Windows XP and later operating systems, a zip-file extractor is furnished as a standard feature, allowing zip files to be treated as ordinary folders. From the Pioneer website, store the downloaded firmware folder (SMA2013NMP1050.zip) on your computer. Open the folder and copy the firmware file (SMA2013NMP1050.fw) located inside the folder to your computer's desktop or other desired location.</li> <li>• Mac OS X and later operating systems allow compressed zip files to be treated as normal files. When you double click on the downloaded firmware zip file (SMA2013NMP1050.zip), a decompressed ordinary folder will be created in the same place.</li> </ul>
Bonjour isn't displayed when using Safari.	<ul style="list-style-type: none"> <li>• Set your computer to allow Safari to display Bonjour.</li> </ul>
Sound stops while listening to Pandora/Internet Radio.	<ul style="list-style-type: none"> <li>• Is the unit's MUTE function enabled? Turn off the MUTE function.</li> <li>• Has an error message been generated? Check the ControlApp screen. If the unit is not connected to ControlApp, connect ControlApp to the unit once again and check the display.</li> <li>• If the above steps do not rectify the problem, try changing the input, or turn the unit off and on again.</li> </ul>
The unit cannot be started (power connected) with the input function set to Pandora/Internet Radio.	<ul style="list-style-type: none"> <li>• When the power is turned on to this unit, it will not start in Pandora/Internet Radio mode.</li> <li>• However, when the unit is set to Quick-Start mode and is currently in standby mode, if one of the <b>Internet Radio</b> or <b>Pandora</b> buttons is tapped, the unit's power will turn on and Internet Radio or Pandora modes will be selected.</li> </ul>
The unit automatically powers down.	<ul style="list-style-type: none"> <li>• If the MUTE function is left enabled for more than 20 minutes, the unit is designed to automatically turn power off.</li> <li>• If the MUTE function is disabled or sound volume is raised, the automatic power off function will be cancelled. For details see the section "Stopping radio play" (P. 3).</li> </ul>
Pandora/Internet Radio continues playing even after stopping ControlApp.	<ul style="list-style-type: none"> <li>• Pandora/Internet Radio will continue to play on the unit even after closing ControlApp. In that case, however, ControlApp cannot be operated.</li> <li>• To access ControlApp operations, start ControlApp once again and connect to this unit.</li> </ul>
Can't connect ControlApp	<ul style="list-style-type: none"> <li>• Is the unit's firmware version lower than [1050]? If so, update the firmware version.</li> <li>• If connection is still not possible, consult the following website: <ul style="list-style-type: none"> <li>- When using iPhone/iPod touch <a href="http://pioneer.jp/support/soft/iapp_controlapp/en.html">http://pioneer.jp/support/soft/iapp_controlapp/en.html</a></li> <li>- When using Android <a href="http://pioneer.jp/support/soft/aapp_controlapp/en.html">http://pioneer.jp/support/soft/aapp_controlapp/en.html</a></li> </ul> </li> </ul>
Remote control buttons don't respond.	<ul style="list-style-type: none"> <li>• When playing Pandora/Internet Radio, the following buttons on the unit's remote control are disabled and cannot be used: ►   (play/pause), ◀◀ (prev), ▶▶ (next).</li> </ul>
The message "Connecting..." appears, but no play starts.	<ul style="list-style-type: none"> <li>• Is the power disconnected to the device? Is the device connected properly to this unit? Check power source and connections for the device.</li> </ul>
Can't play Pandora/Internet Radio	<ul style="list-style-type: none"> <li>• Is a firewall set on network devices? Check the firewall setting on network devices.</li> <li>• Has the Internet connection been dropped? Confirm that network device settings are proper, and if necessary consult your network connections dealer.</li> <li>• Has the radio station interrupted or stopped its broadcast? Note that it may not be possible to access stations even if they are on the issued station list.</li> </ul>